

Flat Belt Conveyors

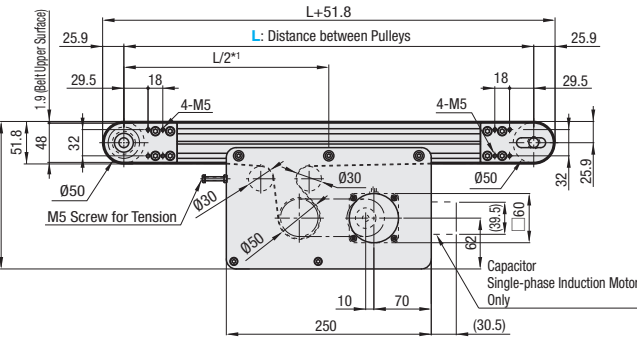
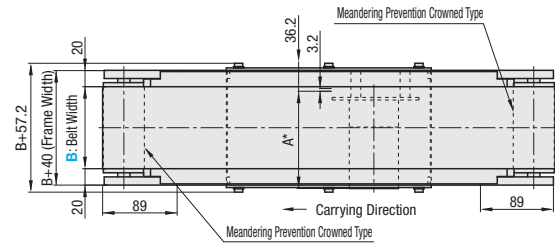
Center Drive, 3-Groove Frame (Pulley Dia. 50mm)

Dedicated web site <http://fa.misumi.jp/cvs/>
 Conveyor selecting, component purchases, and easy search for maintenance parts are available.

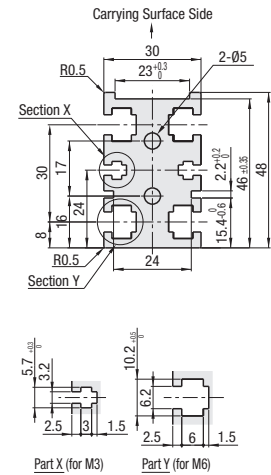
■ Features: A Flat Belt Conveyor with adjustable drive section position. Belt tension can be adjusted at the center drive section, and the overall length does not change after tension adjustment. With the addition of tapped holes for pulley holders, mounting of optional parts becomes easier than that with CVSP.



CVGR 6W Motor Type

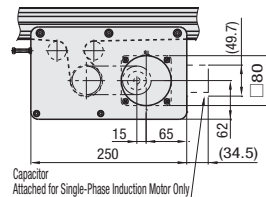


Frame Cross Section and Enlarged View (Symmetrical)

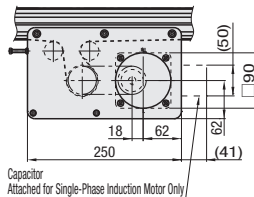
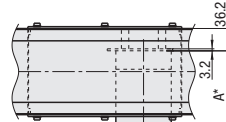


Compatible with JIS standard hex nuts.

25W Motor Type



40W Motor Type



*1 The drive section can be moved to a desired position within the aluminum extrusion slots.

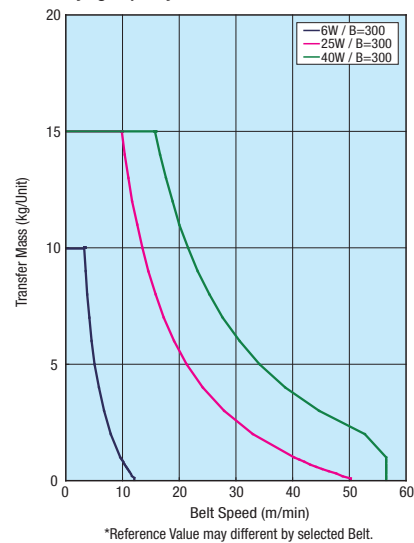
*2 When L>485, each slot has four (4) nuts inserted. When counterbores for inserting nuts are required, please specify in alterations.

The dimensions in the diagram is for Belt Specifications H (0.9mm THK.). Take note that belt thickness varies by Belt Specifications. For Belt Specifications, see P.1279--.

* A Dimension Details

Output (W)	Motor Specification	Manufacturer	Reduction Ratio	A	
6W	Induction Motor	Panasonic	5-25	101.0	
		Oriental	5-25	105.0	
	Variable Speed Motor	Panasonic	30-180	108.0	
		Oriental	30-180	115.0	
	25W	Induction Motor	Panasonic	5-25	111.0
			Oriental	5-18	117.0
Variable Speed Motor		Panasonic	30-180	118.0	
		Oriental	30-180	125.0	
40W		Induction Motor	Panasonic	5-180	115.0
			Oriental	5-18	117.0
	Variable Speed Motor	Panasonic	25-180	127.5	
		Oriental	25-180	137.5	
	6W	Induction Motor	Panasonic	5-180	142.0
			Oriental	5-18	147.0
Variable Speed Motor		Panasonic	25-180	165.0	
		Oriental	25-180	175.0	

Conveying Capacity



Gearhead Reduction Ratio

*May decrease depending on load condition.

Gearhead Reduction Ratio	Belt Speed (m/min)	
	50Hz	60Hz
5	47.1	56.5
7.5	31.4	37.7
9	26.2	31.4
12.5	18.8	22.6
15	15.7	18.8
18	13.1	15.7
25	9.4	11.3
30	7.9	9.4
36	6.5	7.9
50	4.7	5.7
60	3.9	4.7
75	3.1	3.8
90	2.6	3.1
100	2.4	2.8
120	2.0	2.4
150	1.6	1.9
180	1.3	1.6

Part Number	B 1mm Increment	L 5mm Increment	Motor				Belt Specification	Motor Manufacturer Selection
			Output (W)	Voltage (V)	Specification	Gearhead Reduction Ratio		
CVGR	40-300	385-2000	6 25 40	TA230 (Single-phase)	IM (Induction Motor) SCM (Variable Speed Motor)	5 7.5 9 12.5 15 18 25 30 36 50 60 75 90 100 120 150 180	H (General Purpose, Green) W (General Purpose, White) G (For Sliding, Green) S (For Sliding, White) D (For Electronic Parts Transfer) F (For Food Transfer) O (Oil Resistant) N (Non-adhesive) J (No Belt)	A (Panasonic Motor) B (Oriental Motor)
			6 25 40	NV (No Motor)	NM (No Motor)	NH (No Gearhead)	*5-9 not applicable for 6W Motor	R (No Motor, Gearhead)

Connect the motor so that the belt rotates in the direction of conveyance. For connection diagram, and details of motor and inverter, see P.1267 onward.
 When "No motor, gearhead" is selected, the motor mounting hole pitch will vary depending on the motor's power rating. Please see Technical Information in our Conveyor Selection web site for the dimension details.
 When "No motor, gearhead" is selected, this unit will be delivered unassembled. The customer is to assemble the unit according to the included assembly instructions. See our Conveyor Selection site for assembly procedures and packaging details.

Belt Specification	Standard Belt (Body Price Only)	Optional Belt 1	Optional Belt 2	No Belt
General Purpose	H (Green), W (White), HG (Green)	-	HY (Yellow Green), HBN (Sky Blue), HGN (Green)	J (No Belt)
For Sliding	G (Green), S (White)	-	-	
For Inclined Transfer	LG (Green), LW (White)	-	-	
Grip Type	-	GG (Green), GW (White)	GSN (Green)	
Oil Resistant	O (Navy Blue), OH (Green), OG (Green)	OW (White)	ON (White)	
Non-adhesive	N (White), NS (White)	NB (Sky Blue), NBG (Lime Green), HH (Green), HW (White)	NWN (White), NSN (Sky Blue), NGN (Lime Green), HBG (Green), HBW (White), BW (White)	
For Food Transfer	F (White)	KW (White), KSB (Sky Blue), PHB (Sky Blue)	PHN (Sky Blue), PWN (Sky Blue), KWN (White), KDN (White)	
For Electronic Parts Transfer	D (Black), DS (Black)	-	DG (Black)	

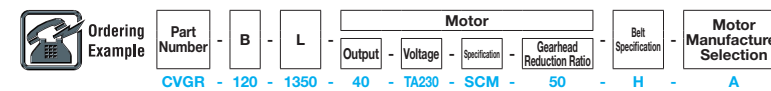
For flat belt details, see P.1279 onward.
 In case of selecting Optional Belts, please select motor manufacturer A or B (Motor C is applicable for Standard Belt only).

Part Number	B	Body Price 1 - 2 pc(s)																	
		L385-400	L405-500	L505-600	L605-700	L705-800	L805-900	L905-1000	L1005-1100	L1105-1200	L1205-1300	L1305-1400	L1405-1500	L1505-1600	L1605-1700	L1705-1800	L1805-1900	L1905-2000	
CVGR	40-50																		
	60-100																		
	110-150																		
	160-200																		
	210-250																		
	260-300																		

For orders larger than indicated quantity, please check with WOS.

Motor Spec. Price	Motor Output	Specification	A (Panasonic Motor)	B (Oriental Motor)	R (No Motor, Gearhead)
	6W	IM			
	25W	IM			
	40W	SCM			

Belt Spec. Price	Standard Belt	Optional Belt 1	Optional Belt 2	No Belt



Ex.) For No Belt: CVGR-100-1000-25-TA230-SCM-25-J-A
 Ex.) For Optional Belt 2: CVGR-100-1000-25-TA230-SCM-25-HY-B
 Ex.) For No Motor, Gearhead: CVGR-100-1000-25-NV-NM-NH-H-R
 Body Price + Motor, Belt Spec. Price = Unit Price



- Specify Drive Section Position
- Additional Counterbores
- Roller Edge
- Motor Cover with Window
- Brackets for Speed Controller Included
- Post-Assembly Insertion Nuts Included
- Motors with Electromagnetic Brake
- Stands (Legs)

For details of alterations, see P.1264 onward.